

Haier

HDC80E1 CONDENSER TUMBLE DRYER



USER MANUAL

4 - 8

9 - 15

16 - 18

TABLE OF CONTENTS

BEFORE USE

Components 3

Preparation 4

Safety instructions 5

Installation 6

Control panel 7

USING THE DEVICE

Program selection 9

Technical data 10

Drying methods 11

MAINTENANCE

Cleaning & care 15

Display codes & troubleshooting... 17

Electric circuit diagram 19

LEGEND



For your safety, any instructions in this manual with this "warning" sign must be strictly followed.



Read the instructions.



Caution, risk of fire- this is a safety symbol. Failure to follow the warnings outlined in these user instructions can cause a fire hazard.

COMPONENTS**THANKS FOR PURCHASING A HAIER PRODUCT**

Please read these instructions carefully before using this appliance. The instructions contain important information which will help you get the best out of the appliance and ensure safe and proper installation, use and maintenance.

Keep this manual in a convenient place so you can always refer to it for the safe and proper use of the appliance.

If you sell the appliance, give it away, or leave it behind when you move house, make sure you also pass on this manual so that the new owner can become familiar with the appliance and safety warnings.

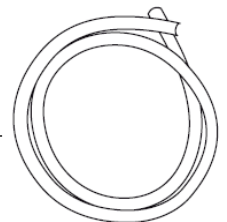
ACCESSORIES

Check the accessories and literature in accordance with this list:

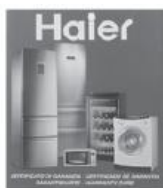
1 x User manual



1 x Drainpipe



1 x Warranty card (optional)



1 x Drying rack



4

BEFORE USE

PREPARATION

PREPARING THE TUMBLE DRYER

Remove all the packing materials to prevent unsteadiness, including the polystyrene base.



DESCRIPTION

Control panel

Door

Service door for condenser

Water collection tank

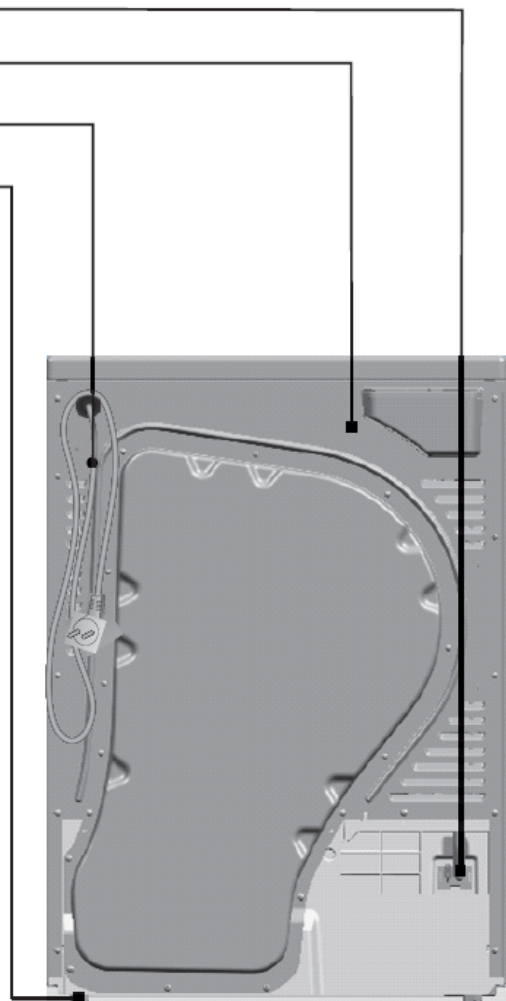


Drainage outlet

Back plate

Power cord

Screw foot



This diagram may be slightly different from the layout of the tumble dryer you have just purchased due to technical improvements.

**SAFETY INSTRUCTIONS**

To reduce the risk of fire, electrical shock, or injury to persons when using this dryer, follow basic precautions, including the following:

1. This appliance is not intended for use by persons (including children) with reduced physical, sensory or mental capabilities, or lack of experience and knowledge, unless they have been given supervision or instruction concerning use of the appliance by a person responsible for their safety. Children should be supervised to ensure that they do not play with the appliance.
2. If the supply cord is damaged, it must be replaced by the manufacturer's service agent or similarly qualified persons in order to avoid a hazard.
3. The maximum mass of dry textile material is 8 kilograms;
4. The tumble dryer is not to be used if industrial chemicals have been used for cleaning;
5. The lint trap has to be cleaned frequently;
6. Lint must not be allowed to accumulate around the tumble dryer;
7. Do not dry unwashed items in the tumble dryer;
8. Items that have been soiled with substances such as cooking oil, acetone, alcohol, petrol, kerosene, spot removers, turpentine, waxes and wax removers should be washed in hot water with an extra amount of detergent before being dried in the tumble dryer.
9. Item such as foam rubber (latex foam), shower caps, waterproof textiles, rubber backed articles and clothes or pillows fitted with foam rubber pads should not be dried in the tumble dryer.
10. Fabric softeners, or similar products, should be used as specified by the fabric softener instructions.
11. The final part of a tumble dryer cycle occurs without heat (cool down cycle) to ensure that the items are left at a temperature that ensures that the items will not be damaged.
12. Oil-affected items can ignite spontaneously, especially when exposed to heat sources such as in a tumble dryer. The items become warm, causing an oxidation reaction in the oil. Oxidation creates heat. If the heat can not escape, the items can become hot enough to catch fire. Piling, stacking or storing oil-affected items can prevent heat from escaping and so create a fire hazard.
13. If it is unavoidable that fabrics that contain vegetable or cooking oil or have been contaminated by hair care products be placed in a tumble dryer they should first be washed in hot water with extra detergent- this will reduce, but not eliminate, the hazard.
14. The appliance must not be installed behind a lockable door, a sliding door or a door where the hinge is on the opposite side to the dryer, where by the full opening of the dryer door is restricted.

WARNING: Never stop a tumble dryer before the end of the drying cycle unless all items are quickly removed and spread out so that the heat is dissipated.

6

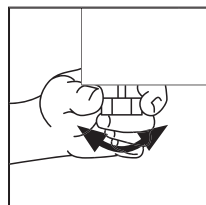
BEFORE USE

INSTALLATION

BASIC INSTRUCTIONS

To ensure the tumble dryer operates normally, attention must be paid to the following instructions:

- The tumble dryer must be level when installed. Its bottom is equipped with adjustable feet. Adjust these 4 feet to level the device before operation.
- Check whether any damage occurred to the tumble dryer during transportation. A damaged tumble dryer must not be used. If the device is damaged, contact your supplier.
- The tumble dryer must be kept away from flammable substances.
- The surrounding environment must be dry and ventilated.
- To allow the tumble dryer to perform better, the ambient temperature shall not be lower than 10 °C nor higher than 35 °C.



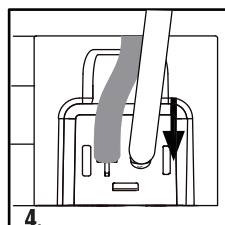
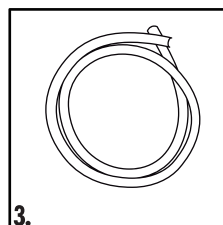
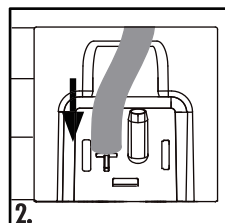
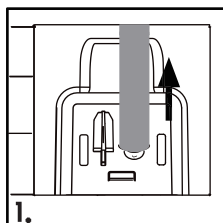
DRAIN SWITCHOVER

During the drying of the laundry, the condensed water is automatically collected in the water collection tank. This water needs to be removed from the tank after every cycle. If your dryer is in the vicinity of a drain, you may choose to allow the condensed water to be discharged directly into the drain through the drainpipe provided to avoid emptying the tank every time.

The method to connect the drainpipe is as follows:

1. Remove the drainpipe from the joint.
2. Insert the drainpipe on the fixture.
3. Take out the accessory drainpipe.
4. Fix the drainpipe at the place of the joint.

Note: When using the drain hose, ensure it is not elevated higher than 1m from the base of the dryer.



CONNECTING TO THE POWER SUPPLY

Before connecting to the power supply, check:

- The socket is adequate for the maximum power of the tumble dryer (For safety, fuses in the power circuit should be rated for no less than 15A).
- The voltage should meet the requirement.
- The power outlet should be capable of accepting the tumble dryer plug.
- Connect the device to an earthed socket outlet.



CONTROL PANEL



- | | | |
|-----------------------------|-----------------------------------|---------------------------------|
| A Power button | E Anti-crease button | I Display |
| B Program knob | F Delay button | J L Maintenance displays |
| C Start/Pause button | G Dry level button | K Child lock display |
| D Signal button | H Temperature level button | |

OPERATIONAL FUNCTIONS

A	→ Power button	– Press this button to power on the tumble dryer. Press it again to power it off.
B	→ Program knob	– Turn this knob to choose the desired drying program. This dryer has 16 program options. For description of specific programs, refer to “program modes” on page 9. When the drying program is selected, the relevant indicator light is on.
C	→ Start/Pause button	– Press this button to start the tumble dryer. Press this button again during the operation of the tumble dryer, the indicator light and display screen will start flashing and the tumble dryer will pause. Press the button again and the program will continue.
D	→ Signal button	– When the drying cycle is finished, an intermittent acoustic signal will sound. Touch this button to cancel the buzzer sound.
E	→ Anti-crease button	– If this additional function is selected, the anti-crease phase at the end of the drying cycle is lengthened by 60 minutes. The laundry can be removed at any time during the anti-crease phase.
F	→ Delay button	– Press this button repeatedly before starting the program to enter the time you want the dryer to be started. You can delay it 1 to 19 hours in 1 hour intervals. When passing 19 hours, the delay time will turn off. After the delay is set, press the “start/pause” button to start countdown (the indicator light will flash).

OPERATIONAL FUNCTIONS

G	→ Dry level button	<p>– Press the button to set the final moisture content of the laundry at the end of cycle.</p> <p>Extra: Extra dry Norm: Ready to wear Damp: Ready to iron.</p>
H	→ Temperature level button	<p>– Press the button to set the drying temperature for some programs.</p> <p>High: High temperature Med: Middle temperature</p> <p>Low: Low temperature Airing: Cool air</p>
I	→ Display	<p>– The display shows the remaining program time, the delay time and other related information.</p> <p>Note: The remaining time to start a program is the default time for the program. During operation, with variation of factors such as the moisture content. The actual remaining time will be automatically adjusted until the preset drying result has been achieved and the program is complete.</p>
J	→ Maintenance displays	<p>– Clean filter</p> <p>Important: After each drying cycle, clean the filter (see section "cleaning & care" on page 15).</p>
L	→ Maintenance displays	<p>– Clean tank</p> <p>Important: After each drying cycle, drain the condensed water tank (see section "cleaning & care" on page 15).</p>
H+D	→ Combined buttons for child lock function	<p>– By pressing the "Temp" and "signal" buttons for 3 seconds after having started a program, the button lock is activated and the icon will light up. Except the power button, all the functional buttons are useless. In order to cancel the button lock, press the two buttons again for 3 seconds.</p> <p>Note: When the cycle ends or the power supply is interrupted, the function will not be cancelled automatically.</p>
K	→ Child lock display	<p>– To show the Child-lock function has been started.</p>

PROGRAM SELECTION

PROGRAM MODES

	PROGRAM	DRYING DEGREE	RECOMMENDED LAUNDRY	MAX. LOAD HDC80E1
Cotton Dry	1 ↪ Extra *)	Extra dry	Heavy cotton fabrics, sheets, gowns	8kg
	2 ↪ Normal	Ready to wear	Cotton fabrics, sheets, coats	8kg
	3 ↪ Damp	Damp	Ordinary cotton fabrics	8kg
Synthetic Dry	4 ↪ Extra	Extra dry	Heavy synthetic fabrics	4kg
	5 ↪ Normal	Ready to wear	Ordinary synthetic fabrics	4kg
	6 ↪ Damp	Ready to iron	Ordinary synthetic fabrics	4kg
Special	7 ↪ shirt **)	/	Shirts	2kg
	8 ↪ Mix	/	Heavy fabrics, need further drying	4kg
	9 ↪ Towel **)	/	Towels	4kg
	10 ↪ Bedding **)	/	Sheets	4kg
	11 ↪ Jeans	/	Jeans	2kg
	12 ↪ Sport	/	Sportswear	2kg
	13 ↪ Refresh	/	Microfiber fabrics	2kg
	14 ↪ Underwear	/	Underwear	2kg
	15 ↪ Express 30	/	Heavy fabrics, need further drying	4kg
	16 ↪ Baby Care	/	Baby clothing	4kg

*) The Extra program is "Energy test program", it is tested in accordance with AS/NZS 2442.2.

**) These programs have reversing function.

WARNING

The final part of a tumble dryer cycle occurs without heat (cool down cycle) to ensure that the items are left at a temperature not causing damage to them.



**TECHNICAL DATA**

HDC80E1

Power source	220 - 240 V / 50 Hz
Max. working current (A)	12
Nominal load (kg)	8
Drying programs	16
Max. power (W)	2100
Dry heating power (W)	1800
Dimensions (HxDxW mm)	845x648x595
Waterproof level	IPX4
Power consumption of the off-mode (W)	0.02
Power consumption of the left-on mode (W)	0.02

DRYING METHODS

PLEASE NOTE

This tumble dryer is for domestic use only. Do not use it for purposes other than that for which it was designed. Follow the instructions given on the label of each garment and dry only machine-dryable garments.

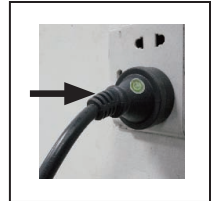


PREPARATION

- Before use, clean any deposits from inside the drum of the tumble dryer with wet cloth.
- Clean debris on the filter screen to increase the drying efficiency.

POWER SUPPLY

Connect the tumble dryer to the power supply (220V to 240V~/50Hz).



BEFORE TURNING ON POWER

Before turning on the power for the tumble dryer, please check.

- Whether the supply voltage is in accordance with the value indicated on the nameplate.
- Whether the supply receptacle can withstand the maximum power load to the tumble dryer.
- Whether the supply receptacle is in accordance with the plug of the tumble dryer. If not, replace the power cord or receptacle to make them accord with each other. The replacement of the power cord must be made by a qualified professional or our authorized service agent.

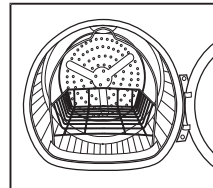
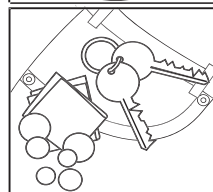
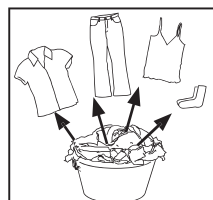
DRYING METHODS

WARNING

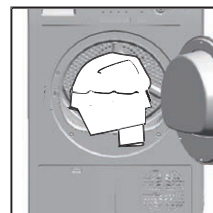
Do not dry silk, feather down and other delicate fabrics to avoid damage to the laundry.

**PREPARING THE LAUNDRY**

- Check whether the laundry to be dried is suitable to be dried in the tumble dryer.
- The tumble dryer can only dry the laundry that has been spun dry. Do not put too wet laundry into the tumble dryer.
- Empty pockets from keys, coins, etc., remove lighters, matches and harder decorative objects (e.g. brooches) and remove adornment that is not suitable to be dried.
- Close zippers and hooks, make sure the buttons are sewn on tightly and place small items such as socks, belts, bras, etc. in a mesh bag.
- Unfold large pieces of fabric such as bed sheets, bedspreads, etc.
- There are many items that would benefit from being dried on a drying rack.
- For example items like sport shoes, soft toys, hats and woollen items that may be shoes, damaged if they are tumbled.
- A drying rack is installed in your dryer when it leaves the factory. To remove it, tilt the top of the rack towards you to detach the legs from the slots in the lint filter, and gently remove from the drum.

**LOADING THE TUMBLE DRYER**

- Laundry should be spun as dry as possible in order to save energy.
- Make sure that the laundry you are going to dry is suitable for drying in a tumble dryer. You will find information about this on the laundry labels.
- Place the laundry evenly into the drum after shaking it loose.
- Make sure not to overload the tumble dryer.
- Fabric softeners or similar products should be used as specified by the fabric softener instructions.

**SWITCH ON THE POWER SUPPLY**

Press the key the dryer will be automatically energized.

Power



DRYING METHODS

SELECTING PROGRAM

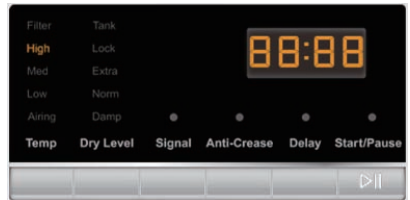
To get the best drying results, an appropriate drying program should be selected according to the laundry type. Please turn the program knob to select the right program.



SELECTING FUNCTIONAL

According to your requirements, select the additional function:

- ▮ Temp
- ▮ Dry Level
- ▮ Signal
- ▮ Anti-Crease
- ▮ Delay
- ▮ Start/Pause



DRYING

Press the "start/pause" button. The tumble dryer will operate according to the pre-set programs. The tumble dryer will stop operation automatically when a drying cycle ends. The "end" sign will appear on the display. Open the tumble dryer door and take out the laundry. If the laundry is not removed, the tumble dryer will start the anti-crease protection automatically. During the anti-crease protection cycle, the tumble dryer's drum will run at intervals to keep your laundry loose.



TURNING OFF THE TUMBLE DRYER

Press the power button to cut off the power supply and unplug the tumble dryer at the wall socket.



TIPS FOR SAVING ENERGY

1. Spin the laundry as dry as possible in the washing machine before putting it into the tumble dryer.
2. Avoid overloading the tumble dryer.
3. Shake the laundry and make it loose before loading it into the tumble dryer.
4. Choose a proper drying program. Make sure the laundry is not dried longer than needed.
5. Clean the filter screen after every drying cycle.
6. Clean the condenser once a month.

DRYING METHODS

CARE CHART



Resistant material



Bleachable in cold water



Don't dry clean



Delicate fabric



Do not bleach



Dry flat



Washable at 95 °C



Iron at 200 °C



Hung to dry



Washable at 60 °C



Iron at 150 °C



Dry on clothes hanger



Washable at 40 °C



Iron at 100 °C



Tumble dry, normal heat



Washable at 30 °C



Don't iron



Tumble dry, reduced heat



Hand wash



Dry cleaning with any solvent



Don't tumble dry



Dry clean only



Dry cleaning with pericloride



Wool Seal



Dry cleaning with aviation fuel

LOAD REFERENCE

Bed sheet (single)	Cotton	Approximately 800g
Blended fabric clothes	/	Approximately 800g
Jackets	Cotton	Approximately 800g
Jeans	/	Approximately 800g
Overalls	Cotton	Approximately 950g
Ladies pyjamas	/	Approximately 200g
Shirts	/	Approximately 300g
Socks	Blended fabrics	Approximately 50g
T-Shirts	Cotton	Approximately 300g
Underwear	Blended fabrics	Approximately 70g

CLEANING & CARE

CLEANING THE TUMBLE DRYER

Wipe the body of the tumble dryer and the control panel with a damp cloth. Remember not to use any organic solvent or corrosive agent to avoid damage to the device.

WARNING

The tumble dryer is not to be used if industrial chemicals have been used for cleaning.

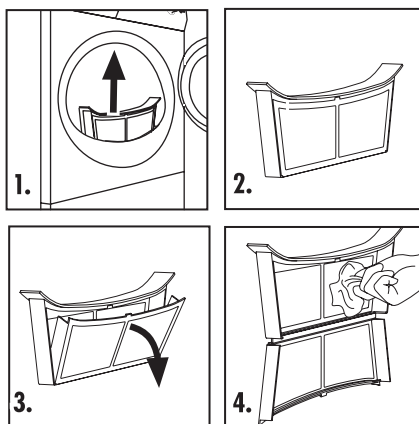


CLEANING THE FILTER SCREEN

To ensure good ventilation during drying, the filter screen must be cleaned after every drying program is complete.

1. Open the door.
2. Remove the filter screen from the tumble dryer.
3. Open the filter screen.
4. Clean off the dust on the filter screen with a wet towel.

After cleaning, put the filter screen back in place.



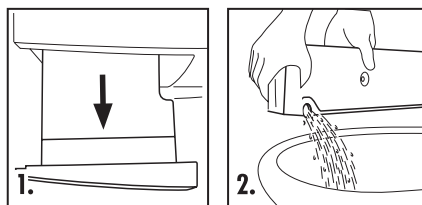
EMPTYING THE WATER COLLECTION TANK

During operation, steam condenses into water and is collected in the water collection tank. Empty the water collection tank after the program is complete.

1. Hold the handle and pull the tank outwards to remove it. Keep it level to prevent the water from overflowing.
2. Pour away the water. Put the tank back in place.

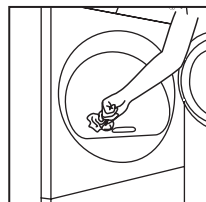
Note: Do not use the water for drinking or for food processing.

If the tank has not been emptied, the tumble dryer will sound an alarm every time the tank is full. In that case the indicator light turns on and the tumble dryer will pause. It will not restart until the tank is emptied and replaced.



CLEANING THE DRUM

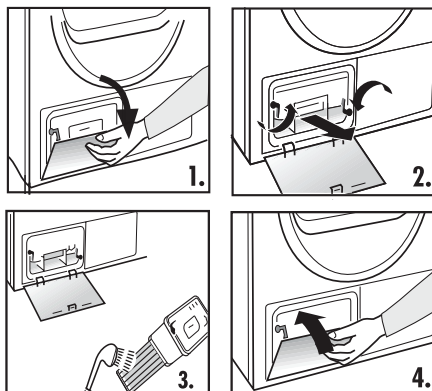
After the tumble dryer has operated for a time, fabric caring agents or calcium contained in the water will form an almost invisible layer on the inside of the drum.



CLEANING THE CONDENSER

The condenser must be cleaned monthly. Switch off the power supply and remove the plug before cleaning:

1. Unlock the maintenance flap and open it.
2. Screw both locking levers towards each other, Pull out the handle/air cooler.
3. Thoroughly clean the handle/air cooler, allow all the water to drip out, then clean the seals.
4. Re-insert the handle/air cooler, handle below, unscrew both locking levers, close the maintenance flap until it locks into position.



Note: Do not use a sharp tool cleaning the heat exchanger, otherwise it may damage its sealing performance.

DISPLAY CODES CODES	CAUSES	SOLUTIONS
the "Tank" is light	→ the water tank is full	– Clean the tank.
F2	→ Drain pump error.	– Please contact the service center.
F31	→ The NTC1 (near the filter) is open-circuited or short-circuited.	– Please contact the service center.
F32	→ The NTC2 (near the heater) is open-circuited or short-circuited.	– Please contact the service center.
F4	→ Temperature of the laundry in the drum does not change.	– Please contact the service center.
F5	→ Communication breakdown	– Please contact the service center.
E6	→ The filter is full.	– Clean the filter.

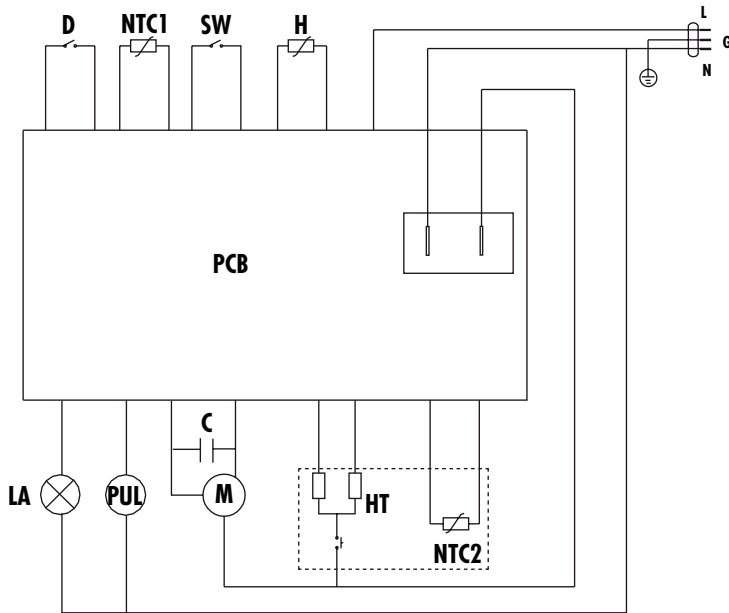
TROUBLESHOOTING

The following circumstances do not constitute problems. Do not contact the service center until the problem has been confirmed.

PROBLEM	CAUSES	SOLUTIONS
Tumble dryer fails to operate.	<ul style="list-style-type: none"> → Poor connection to the power supply. → Power failure. → No drying program is set. → Device has not been switched on. → The water collection tank is full. → The tumble dryer door is not properly closed. 	<ul style="list-style-type: none"> – Check connection to the power supply. – Check the power supply. – Make sure a drying program has been set. – Make sure the device is switched on. – Empty the water collection tank. – Close the tumble dryer door properly.
Tumble dryer fails to operate and the display shows "End".	<ul style="list-style-type: none"> → The laundry has reached the condition defined by the program setting. → There is no laundry in the drum. 	<ul style="list-style-type: none"> – Check if your program setting is appropriate. – Check if there's laundry in the drum.
Drying time is too long and the results are not satisfactory.	<ul style="list-style-type: none"> → The program setting is not correct. → The filter screen has not been cleaned. → The condenser is blocked. → The tumble dryer is overloaded. → The laundry is too wet. → The vent duct is blocked. 	<ul style="list-style-type: none"> – Make sure the program is set correctly. – Clean the filter screen. – Clean the condenser. – Reduce the amount of laundry in the drum. – Spin the laundry properly before drying. – Check the vent duct and unblock it.
Remaining time on the display stops or skips.	<p>The remaining time will be adjusted and corrected continuously and automatically based upon the following factors:</p> <ul style="list-style-type: none"> → Type of laundry. → Loaded amount. → The degree of spinning dry of laundry. → Ambient temperature. 	<ul style="list-style-type: none"> – The automatic adjustment is a normal operation.

ELECTRIC CIRCUIT DIAGRAM

ELECTRIC CIRCUIT DIAGRAM



- D:** Door switch
- NTC1:** Temperature sensor
- NTC2:** Temperature sensor
- SW:** Water level sensor
- H:** Humidity sensor

- LA:** lamp
- PUL:** Drainage Pump
- M:** Motor
- HT:** Heating Element
- C:** Capacitor 8uf

Haier

English